

## **RESOLUTION NO. 20-05-39**

**A RESOLUTION OF THE VILLAGE COUNCIL OF ISLAMORADA, VILLAGE OF ISLANDS, FLORIDA, APPROVING THE SELECTION OF TRANSPORTATION SOLUTIONS & LIGHTING, INC. FOR DESIGN AND INSTALLATION OF LIGHTING SYSTEM AT THE ARTS AND CULTURAL DISTRICT; AUTHORIZING THE VILLAGE MANAGER TO ENTER INTO AN AGREEMENT FOR THE REQUESTED SERVICES; AUTHORIZING THE VILLAGE MANAGER TO EXPEND BUDGETED FUNDS; APPROVING A BUDGET AMENDMENT; AND PROVIDING FOR AN EFFECTIVE DATE**

**WHEREAS**, the Morada Way Arts and Cultural District ("Morada Way") is located between Mile Marker 81.2 and Mile Marker 82 on the Old Highway within Islamorada, Village of Islands (the "Village") and is comprised of art galleries, studio spaces, restaurants and boutique retail shops; and

**WHEREAS**, on the third Thursday of every month, hundreds of locals and tourists attend "Art Walk" and the businesses remain open; and

**WHEREAS**, the streets in Morada Way are under-illuminated and existing lighting in place does not blend appropriately with the character of the area and there are not enough Florida Department of Transportation ("FDOT") street-light poles to properly illuminate the streets; and

**WHEREAS**, the existing light and electric poles are irregularly placed, leaving the streets unevenly lit and with distinct areas of darkness; and

**WHEREAS**, in August 2019, the Village issued Request for Proposals ("RFP") 19-10 for lighting design and installation of lighting fixtures at Morada Way (the "Project"); and

**WHEREAS**, no proposals were received by the closing of the RFP; and

**WHEREAS**, Transportation Solutions Lighting, Inc. ("TSL") subsequently proposed to do the Project at a cost of Three Hundred Eighty-One Thousand Nine Hundred and Forty-Five (\$381,945.00) Dollars, a copy of which is attached as Exhibit "A".

**WHEREAS**, due to the sole proposal provided, the Village Manager recommends TSL to do the Project; and

**WHEREAS**, the Village Council of Islamorada, Village of Islands (the "Village Council") desires to approve the recommendation of the Village Manager; and

**WHEREAS**, the Village Council has determined that the procurement and utilization of these services is in the best interest of the Village and its residents.

**NOW, THEREFORE, BE IT RESOLVED BY THE VILLAGE COUNCIL OF ISLAMORADA, VILLAGE OF ISLANDS, FLORIDA, AS FOLLOWS:**

**Section 1. Recitals.** The above recitals are true and correct and incorporated into this Resolution by this reference.

**Section 2. Approval of Ranking.** The Village Council hereby approves the selection of TSL to design and install the lighting system at Morada Way.

**Section 3. Authorization of Village Officials.** The Village Manager and/or his designee and the Village Attorney are authorized to enter into an agreement with TSL for the requested services.

**Section 4. Authorization of Fund Expenditures.** Notwithstanding the limitations imposed upon the Village Manager pursuant to the Village's Purchasing Procedures Ordinance, the Village Manager is authorized to expend budgeted funds to implement the lighting project.

**Section 5. Approval of a Budget Amendment.** The Village Council hereby authorizes an FY 2019-2020 budget amendment to increase the Public Works Capital Outlay budget by \$81,945.00 to cover the costs of the Project.

**Section 6. Effective Date.** This Resolution shall take effect immediately upon adoption.

Motion to adopt by Councilman Jim Mooney, second by Councilwoman Deb Gillis.

**FINAL VOTE AT ADOPTION**

**VILLAGE COUNCIL OF ISLAMORADA, VILLAGE OF ISLANDS**

Mayor Mike Forster	YES
Vice Mayor Ken Davis	YES
Councilwoman Deb Gillis	YES
Councilman Jim Mooney	YES
Councilman Chris Sante	YES

**PASSED AND ADOPTED** on this 7<sup>th</sup> day of May, 2020.

  
\_\_\_\_\_  
MIKE FORSTER, MAYOR

ATTEST:

  
\_\_\_\_\_  
KELLY TOTH, VILLAGE CLERK

APPROVED AS TO FORM AND LEGALITY  
FOR THE USE AND BENEFIT OF ISLAMORADA,  
VILLAGE OF ISLANDS ONLY

  
\_\_\_\_\_  
ROGET V. BRYAN, VILLAGE ATTORNEY

**Transportation Solutions & Lighting, Inc.**

980 North Federal Highway; Suite 110

Boca Raton, FL 33432

1 (800) 216-4044

sales@tsandl.us



## Quote

ADDRESS	SHIP TO	QUOTE # 9462
Mr. Seth Lawless	Mr. Seth Lawless	DATE 02/28/2020
Islamorada, Village of Islands	Islamorada, Village of Islands	
86800 Overseas Hwy	86800 Overseas Hwy	
Islamorada, FL 33036	Islamorada, FL 33036	
United States	United States	

**SHIP VIA**

TSL trucks

ACTIVITY	QTY	RATE	AMOUNT
<b>Posts and Poles:POLE -Decorative Pole Package, 12' height</b> Pole Package, 12' Black Powder Coat (color options available). Includes Pole, base cover, and anchor bolt set.	29	2,380.00	69,020.00
<b>Lighting Fixtures:Decorative Light Fixture</b> Decorative Downlight Fixture- 30W- 3500K temperature.	29	1,770.00	51,330.00
<b>Lighting Fixtures:Decorative Light Fixture Arm</b> Decorative arm for LED Downlight TSLDECPIX30	29	670.00	19,430.00
<b>Engineering Services:Engineering Package- Full engineering service for AC powered lighting project.</b> Engineering services to include site survey, civil, structural (windload and foundation), electrical, photometric, and construction drawings.	1	33,890.00	33,890.00
<b>Electrical Services:LED Lighting Installation</b> Cut and trench approximately 1900 linear feet 20" deep. Run conduit and pull wires between poles, total of 29 new poles. Back fill trench, landscape to be replaced by Islamorada Public Works. Build and install five 60 Amp services, at five locations to power the five island sections. Pull wires between each five islands, and five new services, using existing conduit. Existing conduits to be located by Islamorada Publid	1	204,275.00	204,275.00

ACTIVITY	QTY	RATE	AMOUNT
----------	-----	------	--------

Works. Install handholes at each pole location. Drill 24" wide by 48" deep at each pole location. Build and install steel rebar reinforcement, and pour concrete for light pole foundation base, 29 total. Install 29 new light poles. Connect 29 new light poles.

MOT not included, but can be provided at additional cost, if necessary.

SUBTOTAL	377,945.00
SHIPPING	4,000.00
<b>TOTAL</b>	<b>\$381,945.00</b>

Accepted By

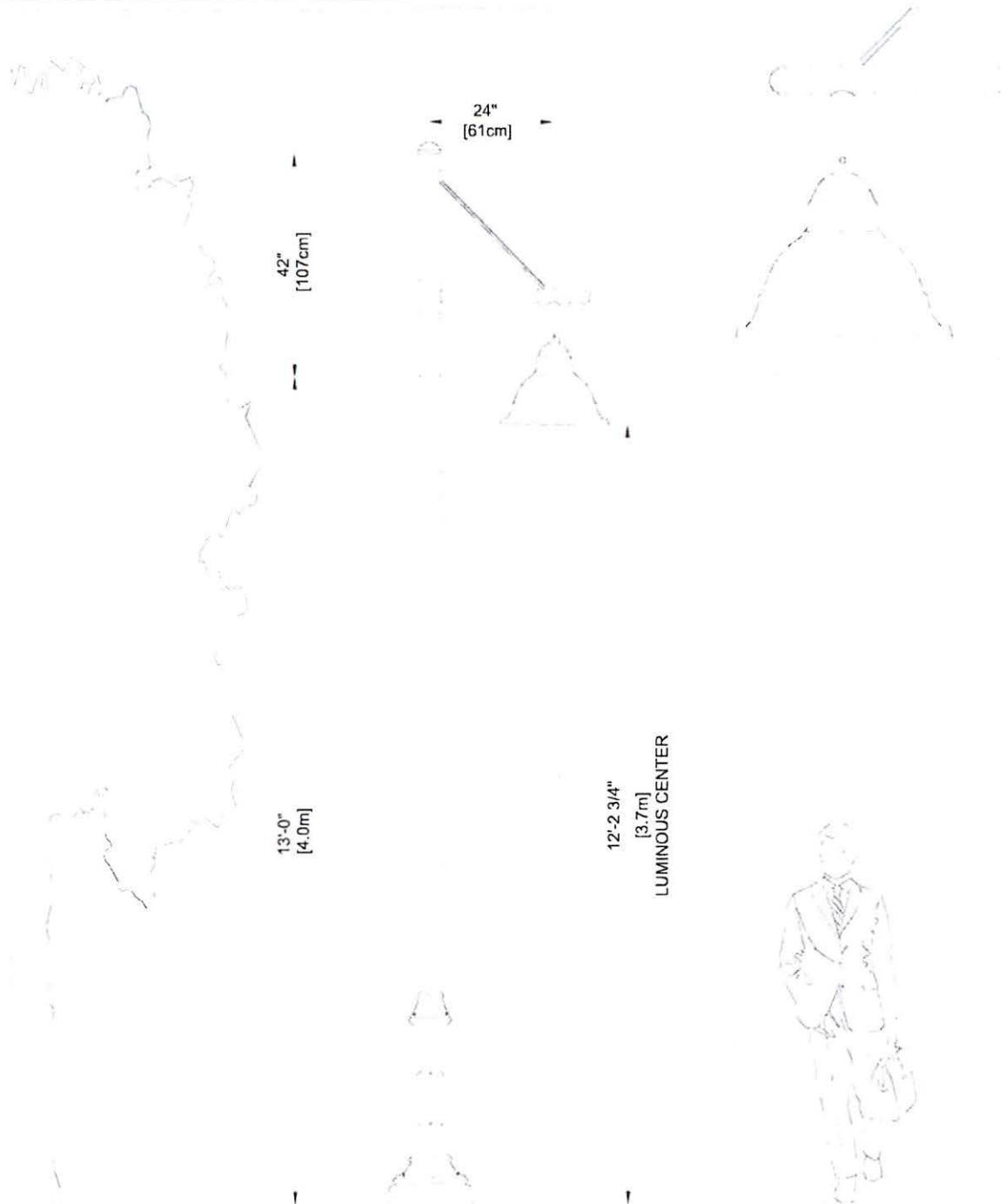
Accepted Date

Project : Islamorada, FL - Islamorada Art District

Order: SQ\_026891

Tag:

Qty:29



Stamp/Approval

Name :

Date :

File : CY55P1B - SQ\_026891 - ISLAMORADA, FL - ISLAMORADA ART DISTRICT.DOC

Date : 30/01/2020 Page : 1/3

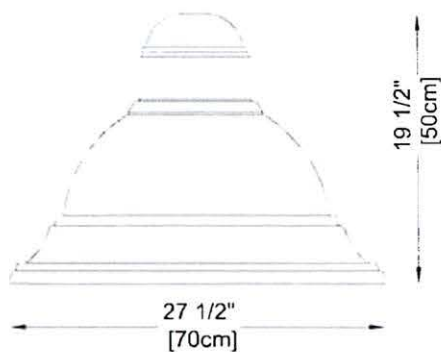
Designer : obeland

Project : Islamorada, FL - Islamorada Art District

Order: SQ\_026891

Tag: A Luminaire : CY55P1B-FGC-3M-30W-3.5K-VOLT-COLOR-TX-CP1

Qty: 29



#### Luminaire components

**Housing module:** Cast aluminum housing. Suspended on tenon and mechanically secured to the adaptor. Complete with "street side" sticker.

**Optic module:** A clear tempered glass flat lens (FGC) is assembled on a cast aluminum lens frame. Made with a silicon gasket compression system, luminaire optical enclosure offers an IP66 weatherproof protection. This module is equipped with the tool free opening system which gives access to the driver module.

#### Optical/electrical components

**LED: 30 Watts, 3500K (Warm White) (CP1).** Super high flux output and high luminance, design for high current operation. LED board is mechanically mounted on heatsink for easy replacement. Minimum color rendering index (CRI) 70. Correlated color temperature (CCT) 3000 Kelvin.

**Optic: IES type III (3M).** The optic's collimator is made of segmented facets to obtain a higher uniformity with a maximum pole spacing. Complete with heat sink radiator to keep the LED temperature down and increase their longevity.

**Heatsink:** Die cast aluminium alloy has been thermally tested for maximum efficacy.

**Driver module:** Auto-adjustable 120-277VAC Class I driver. Primary voltage at \_\_\_\_\_ volts. 50/60 Hz. THD max 20%. ROHS compliant. Assembled on a tool-free removable tray with quick connectors resisting up to 221°F (105°C). High power factor of 90%. Minimum starting temperature: -40°F (-40°C). Maximum operating temperature: 130°F (55°C). Overheat protection: Output current is reduced to 150mA if internal driver temperature (Tcase) exceeds 185°F (85°C). Complete with a 3-Pole 10kA surge protector for Line-Ground, Line-Neutral and Neutral-Ground according to IEEE/ANSI C62.41.2 C High. Certification, maintenance and luminaire codification labels are located within the module. Complete with a 0-10 volts dimming.

#### Generals/Options

**Wiring/hardware:** Type TEW 14-7. 3" (7cm) minimum exceeding from luminaire. All electrical connections between modules are made with quick-disconnect connectors. All exposed hardware is stainless steel. Silicone gasketing are applied.

**Color: To be determined \_\_\_\_\_ (COLOR) / Finish: textured (TX) ☒ or smooth (SM) ☐.** Application of a durable polyester powder coating meets AAMA 2604 requirements (5 years exposure to all weather conditions). The finish meets the ASTM G7, B117, D1654 and D2247 requirements relative to salt spray and humidity resistance. **Cyclone recommends the textured finish for this product.**

EPA : 1.6 ft<sup>2</sup>

Weight: 46 lbs / 21 kg

#### Stamp/Approval

Name :

Date :

File : CY55P1B - SQ\_026891 - ISLAMORADA, FL - ISLAMORADA ART DISTRICT.DOC

Date : 30/01/2020 Page : 2/3

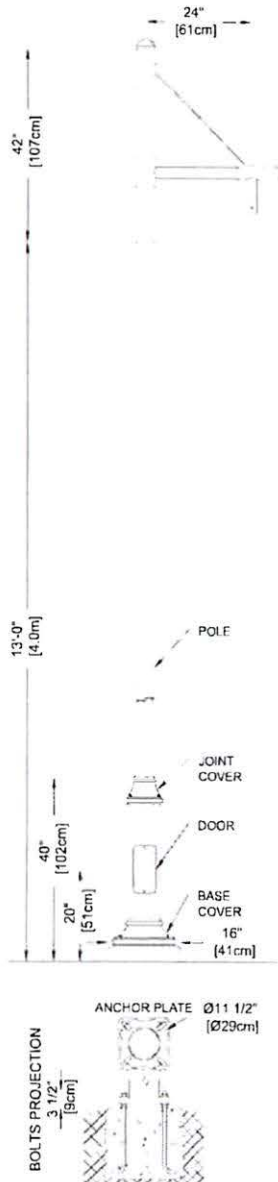
Designer : obeland



Project : Islamorada, FL - Islamorada Art District

Order: SQ\_026891

Tag: A	Bracket : M203-C1-T40-COLOR-TX	Qty:29
Tag: A	Pole : PM47-13-T40-GALV-COLOR-TX-MG	Qty:29
Tag: A	Base cover : BM11-COLOR-TX	Qty:29



#### Components

**Bracket:** Central tubing 4"(10cm)Ø made of aluminum, with one 2 3/8"(6cm)Ø arm and a 1/2"(1cm)Ø round decorative element and tenon for luminaire, welded together. **Single configuration (C1).** Slip fits on the pole tenon 12"(30cm) long x 3 1/2"(9cm)Ø (T40).

**Suspension system:** Retain luminaire with one locking bolt.

**Pole:** Round shape. Made from a 4"(10cm)Ø round, high tensile strength steel tubing, welded to a 6 5/8"(17cm)Ø base. The wall thickness of the pole is 1/8"(3mm) (PM47). The pole is welded to both the top and the bottom of an anchor plate.

**Access door:** Covering a 4"x9" (10cmx22cm) opening with a sealing joint. Giving access to the copper ground lug.

**Decorative cover:** Round shape. A two-piece base cover and joint cover, made of cast aluminum, mechanically secured together.

**Bolt circle:** 11 1/2" (29cm)Ø. Available from 9 1/2" to 12"(24cm to 30cm)Ø.

**Anchor bolts :** Supplied by Cyclone: 3/4" x 20"(17+3)  
Fully galvanized anchor bolts c/w nuts & washers for levelling.

#### Generals/Options

**Hardware:** All exposed hardware is stainless steel. EPDM and/or silicone gasketing is applied

**Color:** To be determined \_\_\_\_ (COLOR) / **Finish:** textured (TX) ☒ or smooth (SM) ☐ - MG (Marine Grade Pre-finish). Application of a durable polyester powder coating meets AAMA 2604 requirements (5 years exposure to all weather conditions). The finish meets the ASTM G7, B117, D1654 and D2247 requirements relative to salt spray and humidity resistance. **Cyclone recommends the textured finish for this product.**

**Any accessories, added or modified that are not described on this approval drawing will automatically void the warranty unless a written consent is given by Cyclone Lighting.**

**GALV:** All steel parts to be hot dipped galvanized.

#### Stamp/Approval

Name :

Date :

File : CY55P1B - SQ\_026891 - ISLAMORADA, FL - ISLAMORADA ART DISTRICT.DOC

Date : 30/01/2020 Page : 3/3

Designer : obeland



# Luminaire Schedule

Symbol	Qty	Label	Arrangement	LLF	Description	Arm	Tag	Lum. Watts	Lum. Lumens	BUG Rating
⊙	29	A	SINGLE	0.850	CY55P1B-FGC-3M-30W-35K	2	Cyclone Domia	33	3237	B1-U0-G1

## Calculation Summary

Label	CalcType	Units	Avg	Min	Max	Avg/Min	Max/Min
Path	Illuminance	Fc	0.34	0.00	1.50	N.A.	N.A.
ROW south of sidewalk	Illuminance	Fc	1.17	0.09	2.95	13.00	32.78

## Luminaire Location Summary

LumNo	Label	Luminous center	Tilt
1	A	12	0
2	A	12	0
3	A	12	0
4	A	12	0
5	A	12	0
6	A	12	0
7	A	12	0
8	A	12	0
9	A	12	0
10	A	12	0
11	A	12	0
12	A	12	0
13	A	12	0
14	A	12	0
15	A	12	0
16	A	12	0
17	A	12	0
18	A	12	0
19	A	12	0
20	A	12	0
21	A	12	0
22	A	12	0
23	A	12	0
24	A	12	0
25	A	12	0

## Luminaire Location Summary

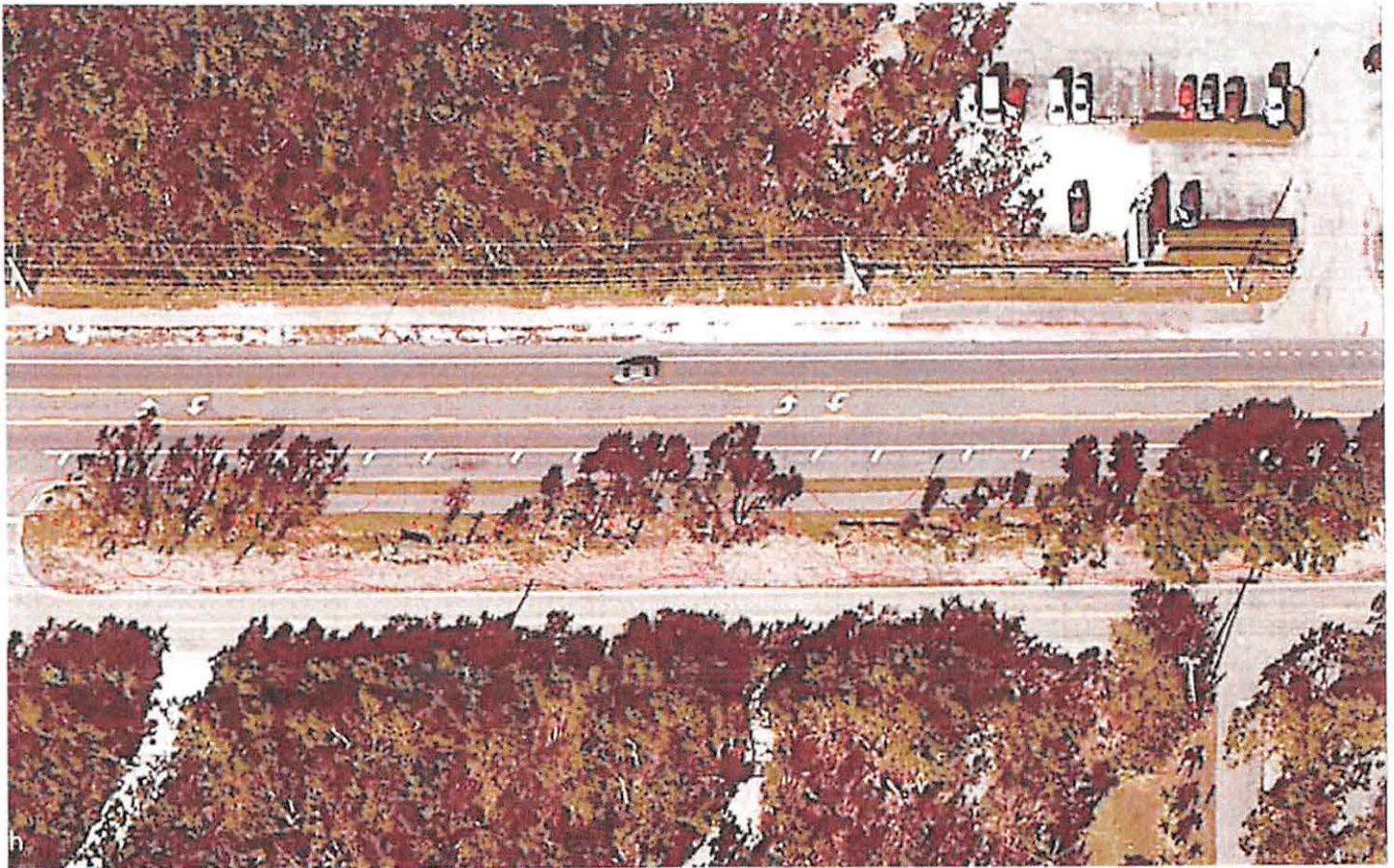
LumNo	Label	Luminous center	Tilt
26	A	12	0
27	A	12	0
28	A	12	0
29	A	12	0



Filename: Islamorada Path Along Highway 1 - 2020\_01\_28- Request.AGI

Date: 2020-01-28 Page 1 of 5 AGI32 Version 19.10.22

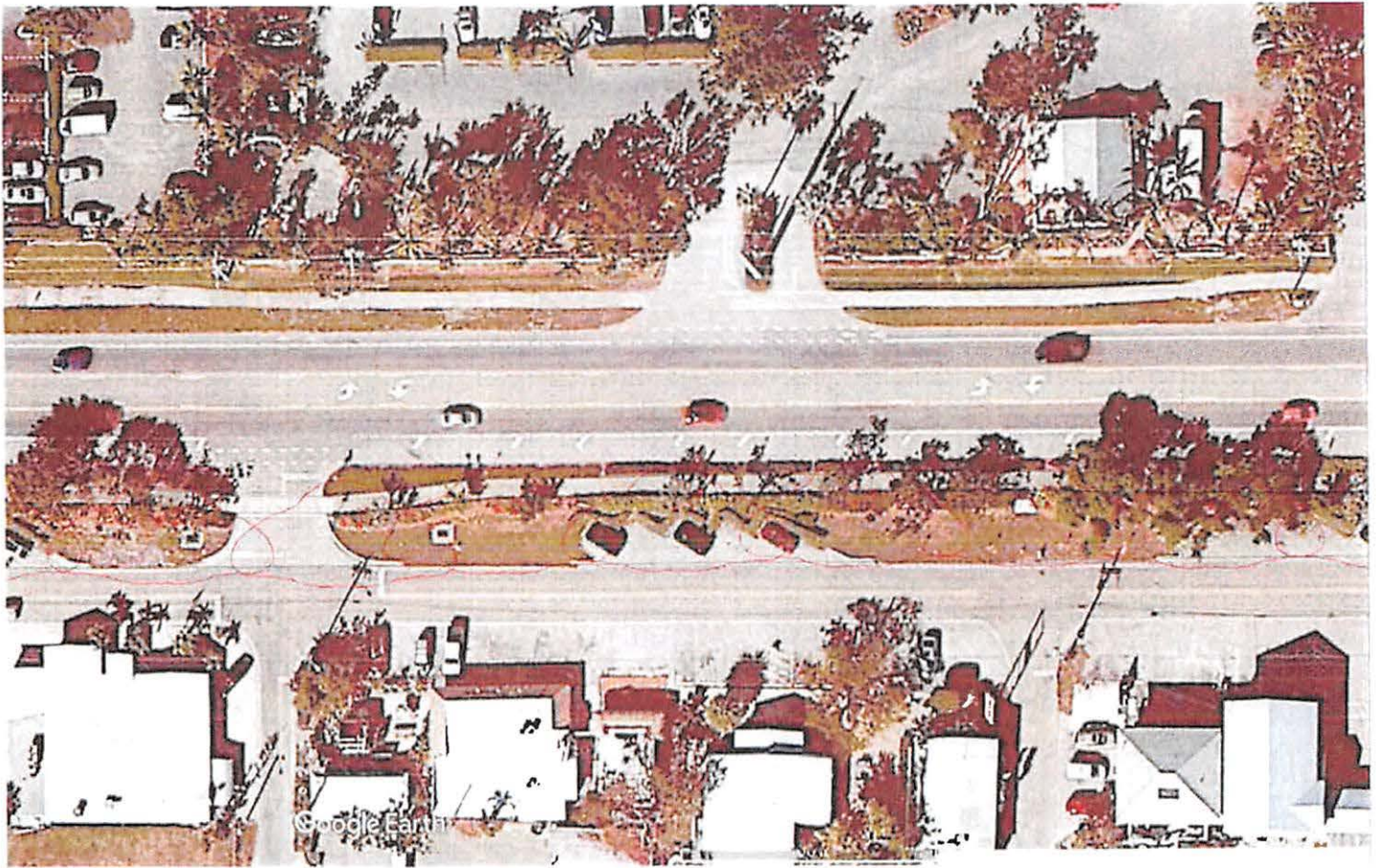
ALL VALUES ARE MAINTAINED HORIZONTAL FOOTCANDLES AT GRADE  
 PHOTO-METRIC DATA USED AS INPUT FOR THESE CALCULATIONS  
 IS BASED ON ESTABLISHED IES PROCEDURES AND PUBLISHED LAMP  
 RATINGS. FIELD PERFORMANCE WILL DEPEND ON ACTUAL LAMP,  
 BALLAST, ELECTRICAL, AND SITE CHARACTERISTICS



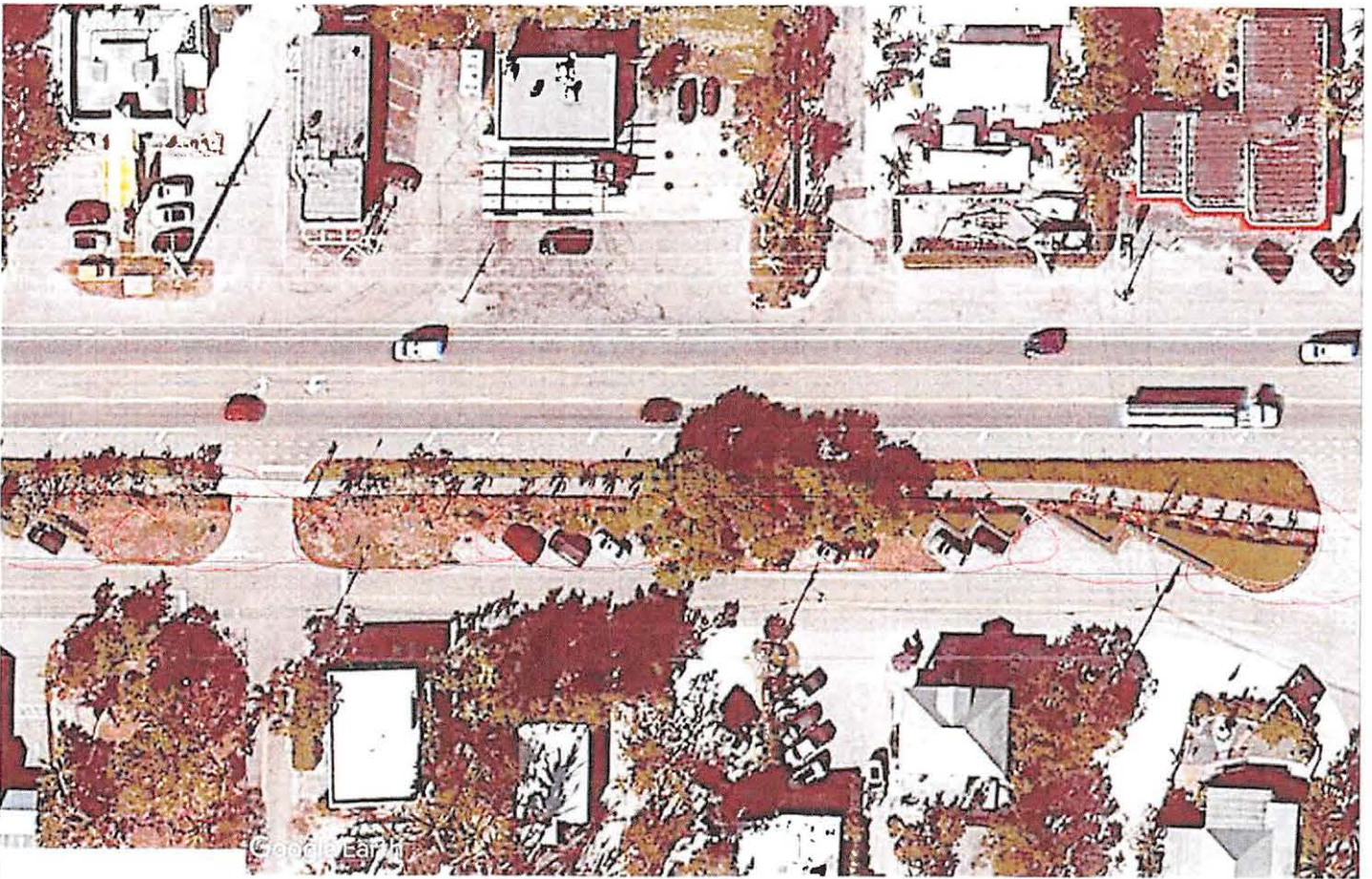


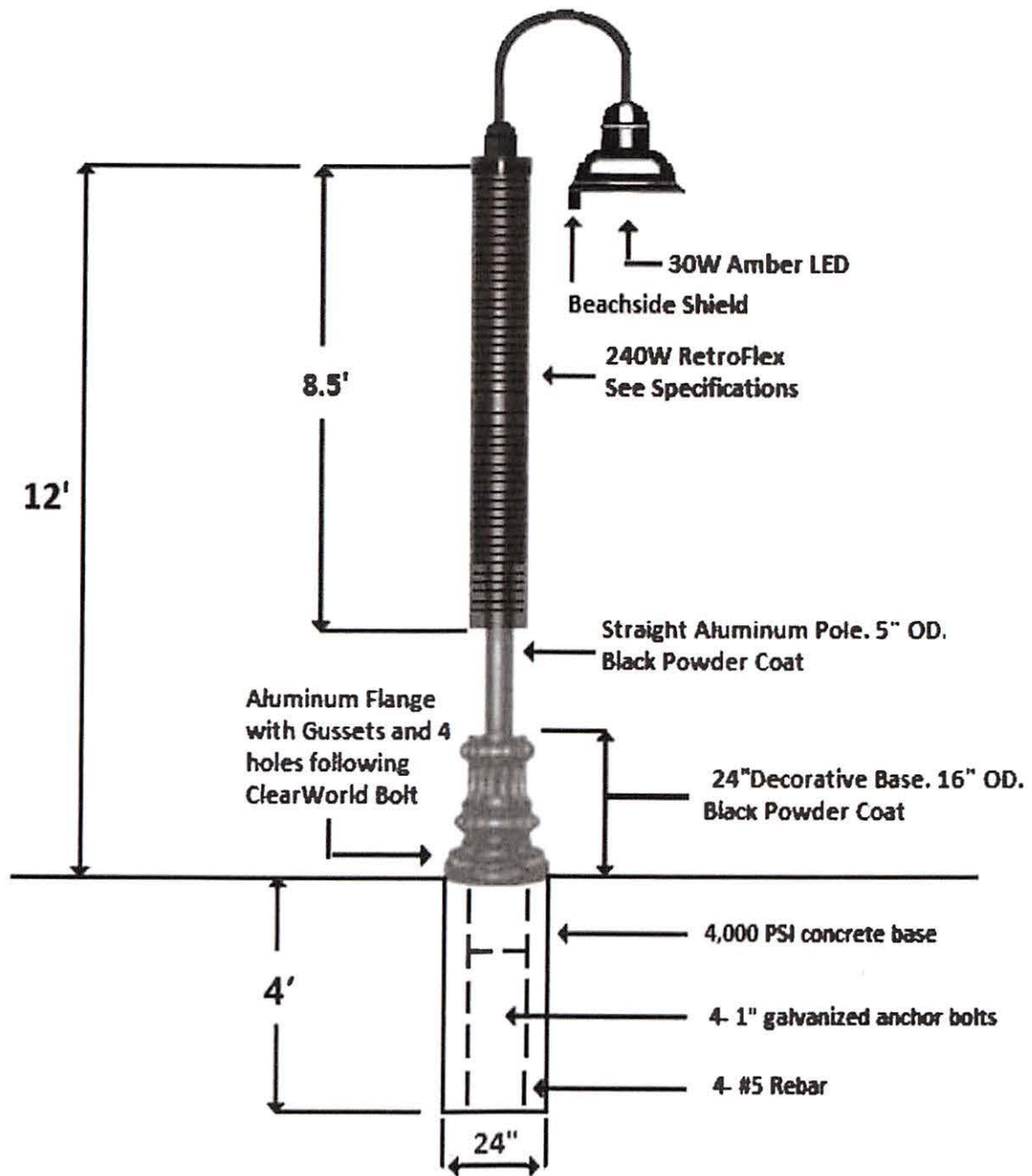












TRANSPORTATION  
SOLUTIONS & LIGHTING





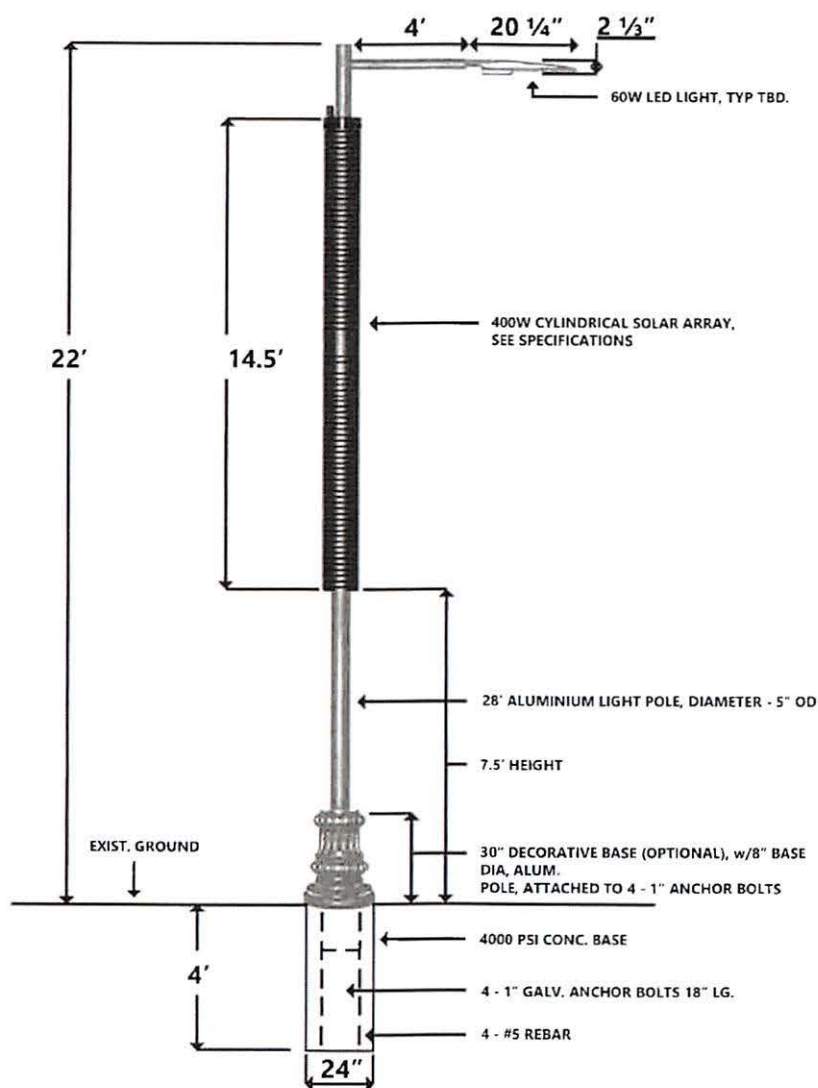
# ClearWorld

Flexibly wrapped Solar  
LED Street and area  
lighting that can be  
retrofitted onto any new  
or existing poles.



TRANSPORTATION  
SOLUTIONS LIGHTING





### Component Specifications : RW4002475

<b>Solar Array</b>	400W (14' 5" in length) with adjustable aluminum array
<b>Lighting</b>	60W LED Module @ 144-162 LM/W, Dimmable @ 3000-5,000K
<b>Battery</b>	24V - 75AH Lithium Ion 1.8 KWH (12+ years life expectancy)
<b>Controller</b>	Electronic MPPT Charge Controller/Regulator
<b>Lighting Controls</b>	Bluetooth Monitoring
<b>EPA</b>	5.25 ft2 (solar panel)



# RETROFLEX® CONFIGURATION OPTIONS



	Off-Grid	Net Metering	Distributed Generation/Advanced Energy Storage
	RetroFlex - OG	RetroFlex - NM	RetroFlex – DGAES
240/320/400/550W Solar Array			
1.44 to 2.44kWh Battery (expandable)			
Remote Access Dimming Capabilities			
DC to AC Micro-Inverter			
Series Metering			
Net Metering			
Programmable Energy Storage			
Programmable Dispatch (2 to 4 hour)			
Peak Demand Reduction <sup>1</sup>			
Alleviates Distribution Constraints			

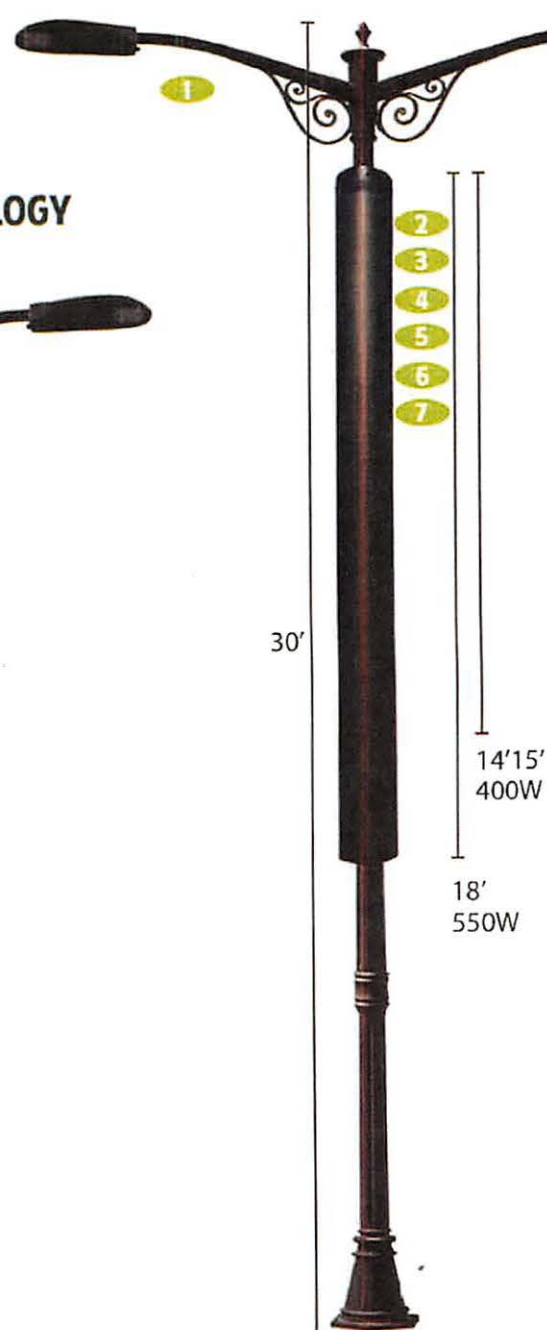
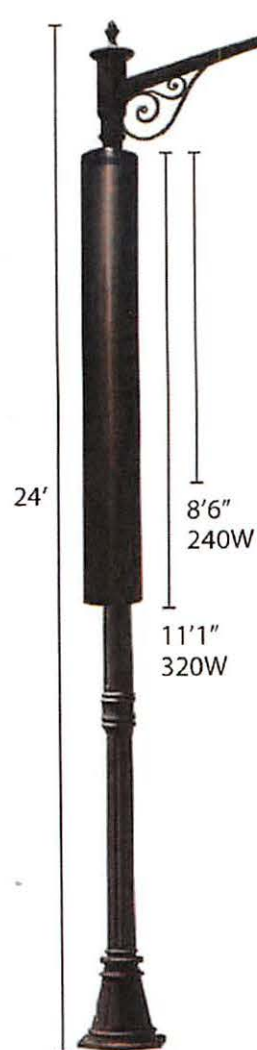
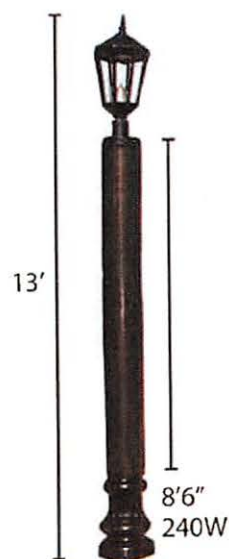
Off-Grid achieves grid independence and improves reliability during extreme weather events and distribution system interruptions. Also eliminates significant costs incurred for new streetlight installations (trenching, wiring, etc.).

Net Metering and DGAES leverage import and export capabilities to enhance system performance and reduce peak demand during daylight hours. Low wattage LED power consumption occurs for 10 hours each night during periods of low demand.

<sup>1</sup>Peak Demand Reduction for RetroFlex-NM limited by the coincidental time of day solar penetration and system peak demand.



## » LIGHTING THE WAY IN SOLAR LED TECHNOLOGY



ClearWorld's patented RetroFlex® system is designed to be Retrofit onto existing or new infrastructure. This aesthetically pleasing solution can be attached to any size pole or diameter, whether round, squared, oval, tapered, wood, concrete or metal. Using our Universal adjustable banding process, it's perfect for all light pole applications.

## » OUR SOLUTIONS

- » New Installation - On / Off Grid
- » Retrofit Streetlights LED / Solar
- » Solar Only - Distributed Generation
- » Smart Grid - LED / Solar / Battery
- » Smart City Solutions

## » COMPONENTS

- 1. LED Street light
- 2. Universal Adjustable Aluminum Array
- 3. Solar Charge Controller/Regulator
- 4. Rechargeable Lithium Ion Battery Pack
- 5. Solar Collectors
- 6. DC/AC Inverter (On-Grid ONLY)
- 7. Wiring